



# Meridian Solar Farm

EN010169

Volume 6

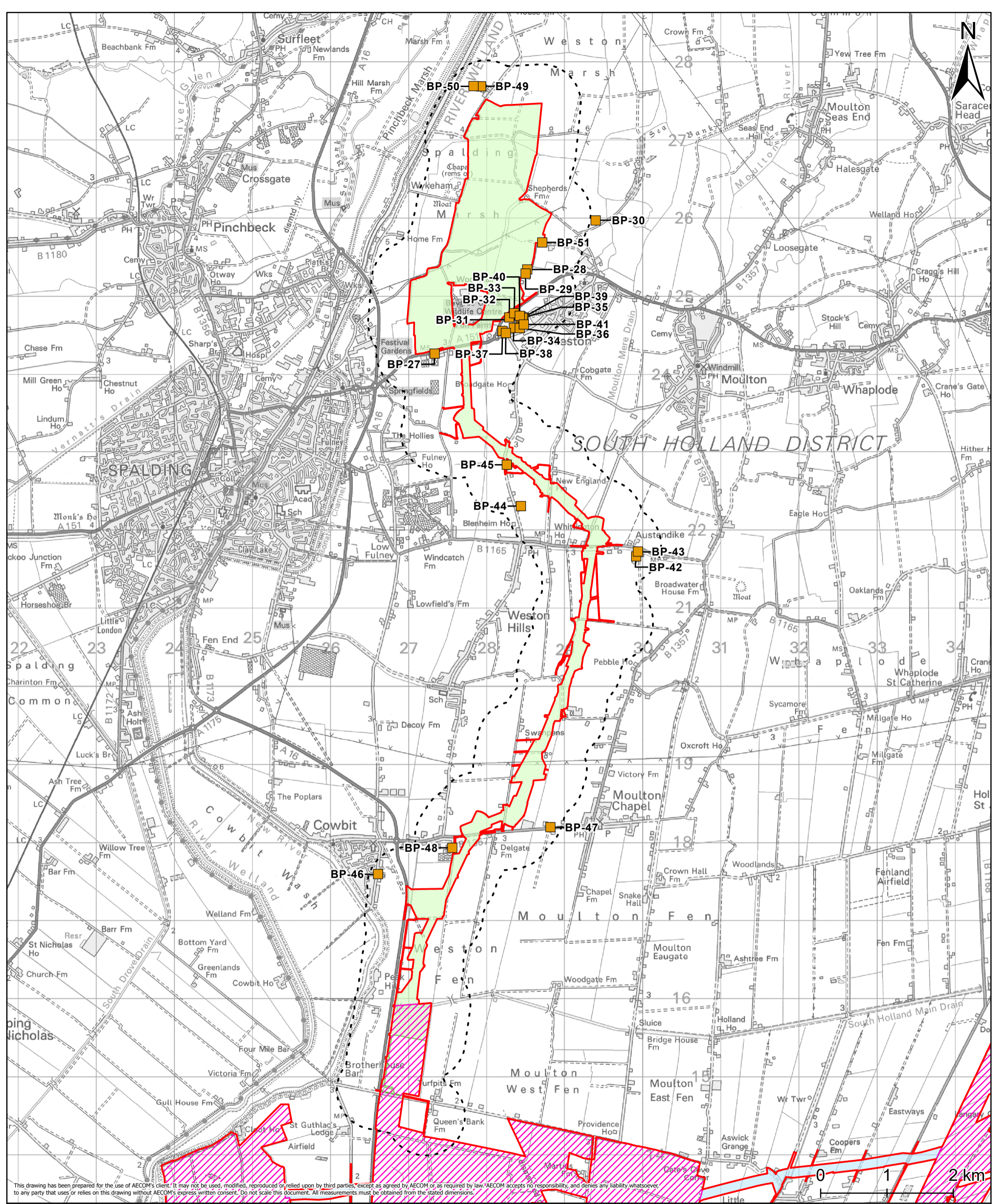
Environmental Statement

6.2 ES Figure 14-6: Business  
Premises in the Vicinity of  
Grid Connection Route

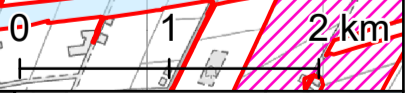
APFP Regulation 5(2)(a)

Infrastructure Planning (Applications:  
Prescribed Forms and Procedure)  
Regulations 2009

March 2026



This drawing has been prepared for the use of AECOM's client. It may not be used, modified, reproduced or relied upon by third parties, except as agreed by AECOM or as required by law. AECOM accepts no responsibility, and denies any liability whatsoever, to any party that uses or relies on this drawing without AECOM's express written consent. Do not scale this document. All measurements must be obtained from the stated dimensions.



Project Title <b>Meridian Solar Farm</b>			
Map Title <b>Environmental Statement Figure 14-6: Business Properties within a 500m Buffer of the Grid Connection Route</b>			
Scale 1:43,000	Version 0	Drawn LL	Reviewed AK

Order Limits
Solar Development Areas
Inter-Array Connections
Grid Connection Route
Grid Connection Route - 500m Buffer
Business Receptor

Date: 20/03/2026

Copyright  
 Contains OS data © Crown Copyright and database right 2026  
 Contains data from OS Zoomstack. Reproduced from Ordnance Survey digital map data © Crown copyright 2025. All rights reserved. Licence number AC000808122. © Local Government Information House Limited copyright and database rights 2025 AC000808122.

